

What's New in Unleashed Multi-Site Manager 2.2?

This application note describes the new features available in Ruckus Networks Unleashed Multi-Site Manager 2.2. This document assumes familiarity with the Ruckus Unleashed Multi-Site Manager (UMM) and the features of earlier release version UMM 2.1 and Unleashed 200.7.

Highlights of this Release

Ruckus Unleashed is a controller-less Wireless LAN (WLAN) solution that enables Small-Medium Business (SMBs) to deliver an optimal wireless experience to their users at an affordable price.

Unleashed Multi-Site Manager is an intuitive, easy to use software product for monitoring and managing Unleashed networks that are deployed around the country or world. The single sign-on feature allows customers to configure, manage, and troubleshoot Unleashed networks from anywhere at any time. UMM is available in both ISO and OVA formats.

Key features and enhancements in this release are:

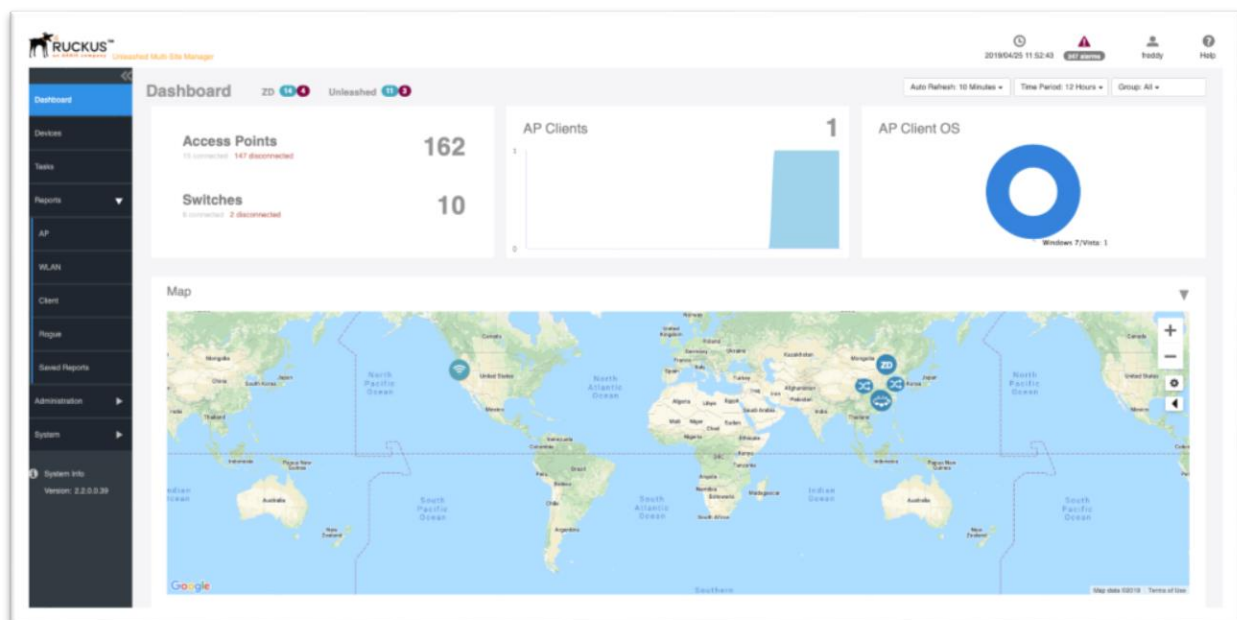
Feature	Brief Description and Benefits
ICX Switch Management	Customers can now manage and monitor ICX switches. View switch status, switch usage, events, alarms, perform configuration backup and restore and upgrade firmware from the UMM interface.
Support for Public APIs	Integrate third-party applications for data management with UMM. We currently provide access to data collection and the ability to edit the SSIDs to change their names and PSKs.
Upgrading Unleashed Networks	Upgrade Unleashed APs instantaneously or schedule an upgrade as a task to be performed at a later day and time of your choice from the UMM interface. Note that upgrade happens only when Unleashed APs are online. Upgrade process depends on upgrade function of the Unleashed AP and the UMM serves as a medium to initiate the upgrade process.
Editing WLANs	Edit the WLAN configuration—SSID, PSK password of a WLAN from the UMM interface.
Editing Tasks	Modify the scheduled time and FTP folder for tasks created, such as config backup or firmware upgrade, from the tasks section on UMM.

Support for Unleashed 200.7

UMM now shows AP groups, introduced in Unleashed 200.7 as well as M510 information on the web interface.

ICX Switch Management

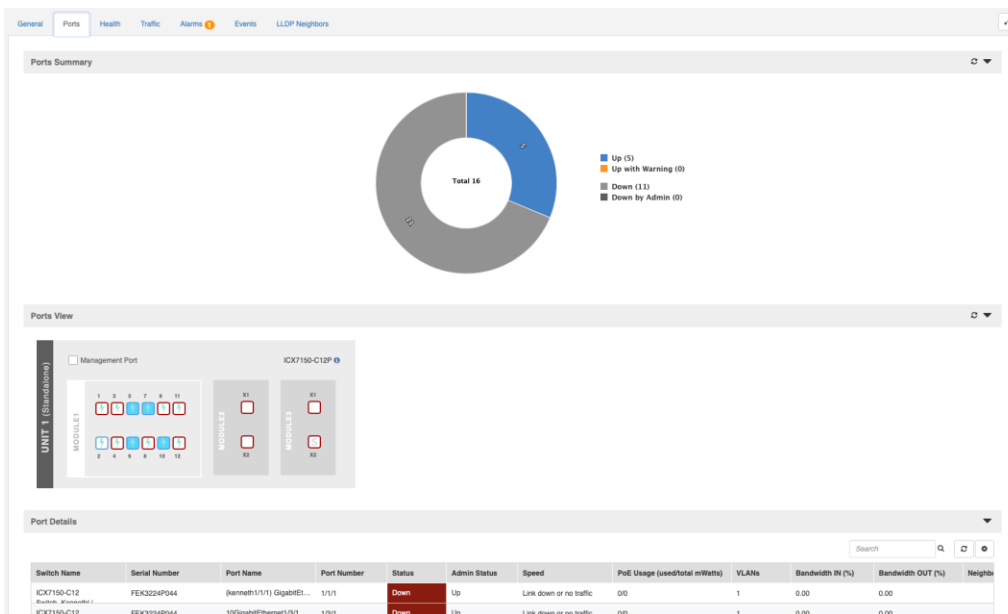
Customers can now manage and monitor ICX switches. View switch status, switch usage, events, alarms, perform configuration backup and restore and upgrade firmware from the UMM interface.



In addition to Unleashed networks, ZoneDirector based networks (if any), P300 devices (if any) customers can now manage ICX switches. The dashboard gives a detailed view of APs and Switches.

Customers can gain insights on the port connectivity information, serial number and model number in devices tab. Customers can access detailed switch port connectivity as well from the UMM web interface.

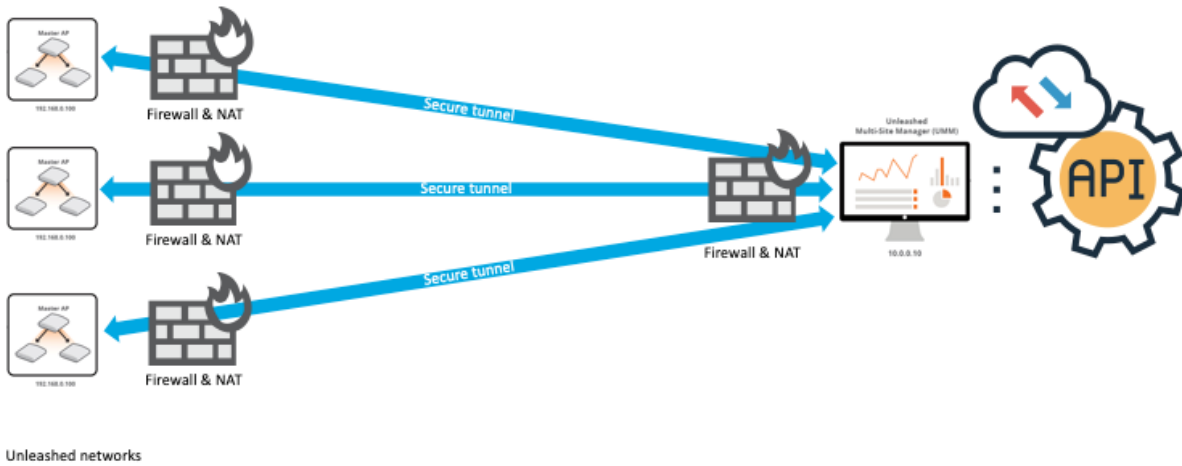
Name	Port Status	Serial Number	Connection	SSM Connection	Management IP	Model	Uptime	Software	License Consumed	Inventory
ICX7150-24P Switch_Am...	🟢🟢🟢🟢🟢🟢	DJ0622P047	🔴	🔴	10.223.5.26	ICX7150-24P	38 days, 0:14:41.00	SF300000	1	Partn...
ICX7150-48P Switch...	🟢🟢🟢🟢🟢🟢	CY0024P029	🔴	🔴	10.223.10.212	ICX7150-48P	9 days, 1:11:50.00	SF300000	1	Partn...
ICX7150-C12 Switch...	🟢🟢🟢🟢	FEK322P044	🔴	🔴	10.223.78.150	ICX7150-C12P	11 days, 0:52:38.00	SF300000	1	Partn...
ICX7150-C12 Switch_Am...	🟢🟢🟢🟢	FEK322P044	🔴	🔴	10.223.81.33	ICX7150-C12P	78 days, 18:58:40.00	SF300000	1	Partn...
ICX7150-48P Switch_Am...	🟢🟢🟢🟢	FA0422P039	🔴	🔴	10.223.4.32	ICX7150-48P	44 days, 11:38:48.00	SF300000	1	Partn...
ICX7150-48P Switch_Am...	🟢🟢🟢🟢	FA0422P035	🔴	🔴	10.11.158.85	ICX7150-48P	44 days, 11:40:10.00	SF300000	1	Partn...
4x4 switch	🟢🟢🟢🟢	FE034M003	🔴	🔴	10.223.10.229	ICX7150-48-POE		SF300000	0	Admin...
4x4 switch	🟢🟢🟢🟢	8888888	🔴	🔴		ICX7150	0:08:50.80	8054	12	Partn...
4x4 switch	🟢🟢🟢🟢	8888887	🔴	🔴		ICX7150	0:08:50.81	8054	12	Partn...
4x4 switch	🟢🟢🟢🟢	8888886	🔴	🔴		ICX7150	0:08:50.81	8054	12	Partn...



Support for Public APIs

Integrate third-party applications for data management with UMM. We currently provide access to data collection and the ability to edit the SSIDs to change their names and PSKs.

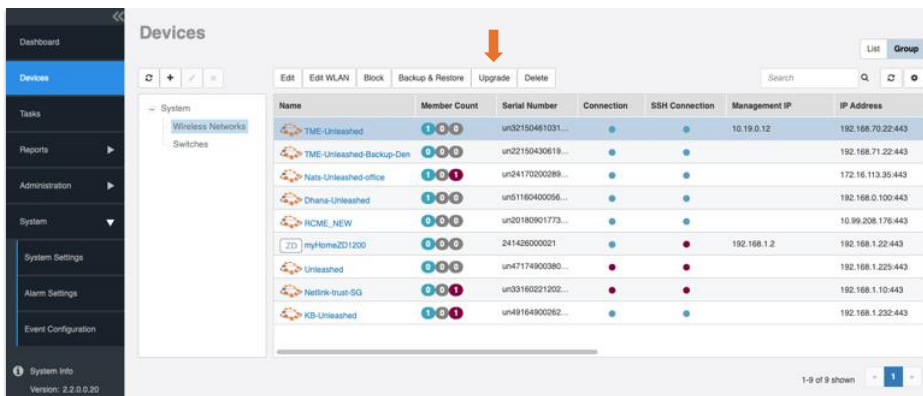
MSPs or IT admins seeking to integrate different 3rd party applications can leverage the APIs to connect to UMM.



Upgrading Unleashed Networks

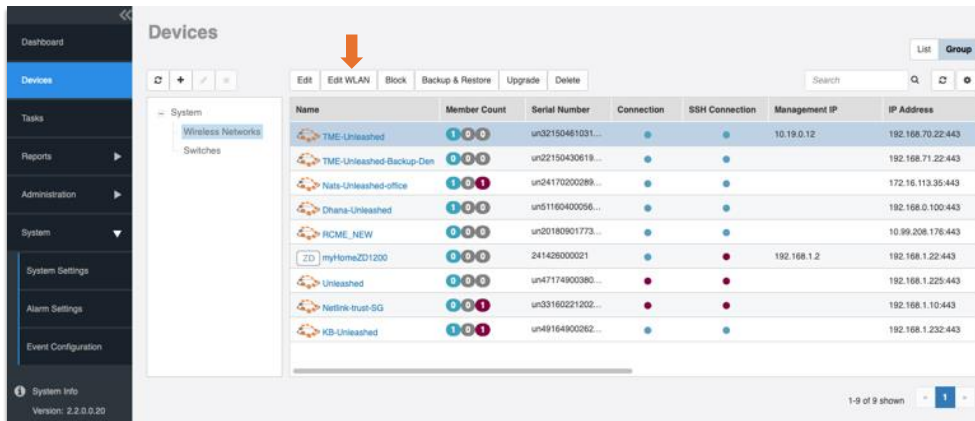
Upgrade Unleashed APs on-the-spot or schedule an upgrade as a task to be performed at a day and time of your choice from the UMM interface.

Note that upgrade happens only when Unleashed APs are online. Upgrade process depends on upgrade function of the Unleashed AP and the UMM serves as a medium to upgrade process.



Editing WLANs

Edit the WLAN configuration—SSID, PSK password of a WLAN from the UMM interface for any Unleashed network from the devices section of the UMM interface.



Editing Tasks

Unleashed Multi-Site Manager provides the capability to create tasks such as creating a config backup or scheduling a firmware upgrade for an unleashed network. Customers can now modify the scheduled time and FTP folder for tasks created.

